

Celebrity 210

Words by Anton Pretorius
Pictures by Dean Castle





Recently Leisure Boating took a trip to Knysna to see what the self-proclaimed boating capital of South Africa had to offer. We met up with Knysna Honda Marine to review their Celebrity 210, and found this 21-foot shark to be more than worthy of the most luxurious of moorings in any boating capital.



Although very easy on the eye, the Celebrity 210 is definitely not a case of more style than substance.

Being on the Celebrity 210, I couldn't help but notice striking similarities that exist between this boat and some famous high-performance cars. For instance, the craft's powerful Honda 200 HP four-stroke engine purrs like a Porsche's; its silky-smooth responsiveness reminds me of a Ferrari's; and the boat's exquisite interior is as sleek and stylish as that of a Rolls Royce.

But after taking a cruise on the Celebrity 210, you'll probably want to sell your Porsche, Ferrari or Rolls Royce, move to the coast, and settle for a life of leisure with the sea as your playground and a Celebrity 210 your toy. This highly-recommended craft will provide you with the experience of a lifetime.

It's hard to not use superlatives when describing Mallard's Celebrity 210.

And although the craft is very easy on the eye, it's definitely not a case of more style than substance. Coupled with a sleek and stylish design, the boat's unflinching power, handling and responsiveness make it the ultimate beast on the water.

Conditions

This Celebrity 210 belongs to professional water-skier Andrew Stam, who currently runs a ski school at Portland Manor's Lawnwood Lake, probably one of the most scenic locations to do a boat review.

With a hippo, zebras and antelope grazing along the banks, the Celebrity 210 was in good company – she put me in mind of a fierce water predator, ready to attack and devour any slalom course.

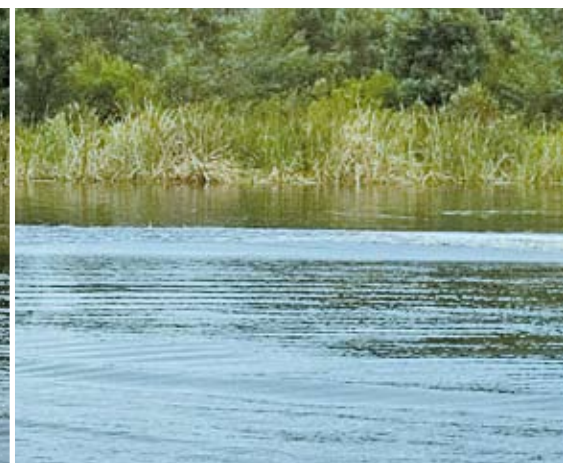
We arrived at our location around 17h00, just in time to catch a view

of the setting sun reflecting eerily on the mirror-like water of the lake. After a particularly hot day, the sun slowly disappeared behind the western horizon and the temperature dropped to a bearable 24°C.

With hardly any wind, the water was dead calm. Excellent waterskiing conditions prevailed, but we left the skiing to the pros. While watching them fly through a slalom course, we kicked back and enjoyed an exhilarating cruise on the Celebrity 210.

Performance

There'll always be a special place in my heart for a Honda four-stroke 200 HP outboard engine. Honda, being one of the biggest engine manufacturers in the world, has impressed yet again as this engine complemented the design of the Celebrity 210 perfectly.





Dave Hoets shows us that no matter how hard you pull, or how much drag you apply, the Honda 4-Stroke doesn't let the rpm drop.

Designed for torque, it got the boat onto the plane in minimal time.

And the 3.5-litre four-stroke is very quiet; it was possible for passengers to converse while the boat was at full-throttle without having to scream at each other. But while idling, the low, rumbling roar was a clear indication that under this engine lay some serious power.

When Andrew decided to open throttle, I had to hold on for dear life. The torque out of the water was sublime, and we popped smoothly onto the plane in a matter of seconds. Cruising at nearly 90 km/h, with unwavering tracking, the boat's rpm stayed put at 5 500. While towing a slalom skier at 55 km/h, surprisingly, the rpm of the boat doesn't drop to less than 3 650, proving that the Celebrity 210 clearly means business in the speed and torque department.

This particular craft's owner, Andrew, is also full of praises for its fuel economy. "It has an 80-litre fuel capacity, and I've used it for eight hours of slalom skiing and still have 40 litres of fuel left," said Andrew. Even though the four-stroke could prove to be more expensive upfront, it certainly has economical fuel-consumption and efficiency, and will therefore save you money in the long run.


Handling

The handling was, needless to say, impressive. Durban boat-manufacturers Mallard have certainly outdone themselves with the Celebrity 210's grip, stability and smoothness on the water. Dave Hoets, our slalom skier for the day, could attest to this too. Despite her momentum, the boat was able to hold her torque throughout the course.

Dave, who is also the Principal Dealer of Honda Marine Knysna, had a great time slaloming behind this boat, and shared with us that Celebrity 210s are selling like hotcakes because boat buyers are instantly hooked on their superb handling.

No matter how fast we went or how sharply we turned, the Celebrity's high-speed cornering was incredible, and there wasn't the slightest hint of cavitation. Her electro-hydraulic steering makes taking the helm and manoeuvring her around on the water a joy.

Interior and exterior

I think that even James Bond would appreciate the Celebrity's sleek and modern interior set-up. Many comparable craft that slot into the sporty model are usually bling-ed up. Styling instead of pimpin', the Celebrity is a 





The dashboard shows that elegance and functionality can work together – perfectly.

clean, sleek and uncluttered speedboat. If Bond were currently in the market for a boat, you can bet for sure that he'd opt for the Celeb 210 – it would suit his suave personality and lifestyle perfectly.

Bow and cockpit seating comes in the form of well-cushioned benches, each complete with a hatch for ample storage space. The centre of the deck has a storage hatch for larger equipment like paddles, skis and wetsuits.

The deck is fully carpeted, and as all avid boaters know, carpets can be susceptible to mildew if wet and not maintained properly. But the Celebrity 210's internal carpeting is made from nylon, which is easy to maintain, and according to Dave it doesn't have that horrible stench when it gets wet.

Adjustable swivel seats located at the cockpit and on the co-pilot side provide

comfortable seating and enable you to get a 360° view of your surroundings. A wraparound walkthrough windscreen guards against the wind, a necessity on the Celebrity when you're travelling at 90 km/h. A sophisticated cockpit dashboard with a cupholder and neatly-placed speedometers and rev-counters gives it an unfussy but classy look.

A compact cubbyhole in the co-pilot console has room for valuable items like cell phones and wallets. The co-pilot console also features a cupholder and space for a radio/CD player with two speakers placed strategically on the boat.

A useful and convenient feature is the small removable cocktail table, complete with four cupholders, at the stern of the boat. The stern seating surrounds it, making this area perfect for socialising with friends and family.



The removable table is flanked by comfortable seating, making this the ideal socialising spot.

The exterior of the boat is also extremely handsome. A turquoise and light blue band separates the sleek white hull from the deck. With her well-groomed lines, the boat has a classy but don't-mess-with-me image that looks as sophisticated as it does dangerous.

The Celeb comes complete with a fold-up sun canopy, a hidden telescopic ladder, and navigational lights at the stern of the boat.

Conclusion

Unfortunately we couldn't take the Celebrity 210 for a spin ourselves, but left the driving in the capable hands of Andrew, and he displayed the full capabilities of the boat splendidly. My experience from the passenger seat, despite not touching the wheel, was nonetheless thrilling.

All aspects of the Celebrity 210 were impressive. But most profoundly, it was the craft's performance and handling that struck me. If slalom and waterskiing is one of your favourite pastimes, I'd recommend the Celeb 210 in a heartbeat.

And Andrew's passion for this boat was contagious. After a trip on the Celebrity 210, it's difficult to fight off the desire to own one. Luckily the Celeb comes at a reasonably affordable price, starting at R255 000, which is a small price to pay if you consider what you get. It is the ultimate stylish, powerful, versatile and social boat and will keep you happily entertained for hours on the water. For more information call Dave Hoets on (044) 382 4090 or email him on dave@knysna.sa.com. ■

At a glance

L.O.A:	21-ft / 6.4 m
Engine:	3.5-litre Honda four-stroke 200 HP
Boat Weight:	1 400 kg
Fuel Capacity:	80 litres
Max rpm:	5 000 – 6 000
Starting:	Electric
Steering:	Electro-hydraulic
Top Speed:	90 km/h